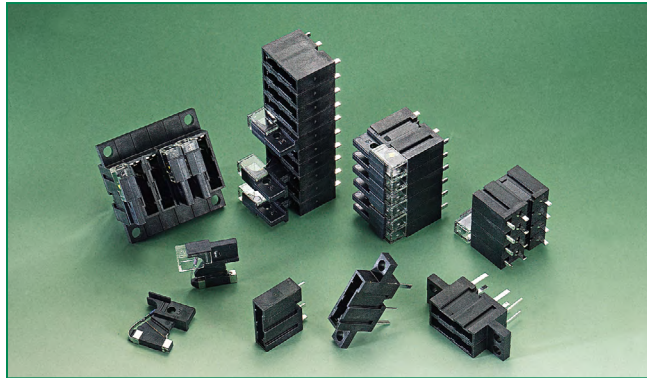


482 Series Fuseholders



Description



Ideal for telecommunications and control panel circuits, the 482 Series fuseholder is designed for use with Littelfuse 481 Alarm Indicating Fuses. Each holder is designed to accept other manufacturers' replacement fuses as well. The fuseholder is available in three versions:

PCB Mount - 15A: Can be soldered directly to a printed circuit board. Rated up to 15 amperes. Available in single pole or gangable up to 20 poles. Fuseholder is keyed to prevent insertion of 20 ampere fuse.

Panel Mount - 20A: Available in a single pole version rated up to 20 amperes. Large leads for wire attachment.

Panel Mount - 15A: 15 ampere gangable version of fuseholder is keyed to prevent insertion of 20 ampere fuse.

Agency Approvals

| Agency | Agency File Number |
|---|--------------------|
|  | E14721 |
|  | 7316 (15A Only) |

Product Characteristics

| 482 Fuseholder Series | 15A PCB Mount and Panel Mount | 20A Panel Mount |
|--|---------------------------------------|---------------------------------------|
| Electrical Rating | Rated at 15 amperes up to 125 VAC/VDC | Rated at 20 amperes up to 125 VAC/VDC |
| Body Material | Thermoplastic (UL 94V-0) | Thermoplastic (UL94 V-0) |
| Fuse Terminal Material | Tin-plated Beryllium Copper | Tin-plated Beryllium Copper |
| Alarm Terminal Material | Tin-plated Brass | Tin-plated Brass |
| Operating Temperature | -55°C to +125°C. | -40°C to 85°C |
| Thermal Shock | Withstands 5 cycles of -55°C to 125°C | Withstands 5 cycles of -55°C to 125°C |
| Vibration | Per MIL-STD-202 | Per MIL-STD-202 |
| Insulation Resistance (After Opening) | Greater than 10,000 ohms. | Greater than 10,000 ohms. |

Additional Information



[Datasheet](#)



[Resources](#)



[Samples](#)

Ordering Information

20A Panel Mount Fuseholder

| Type | Holder Length * | 20A Panel Mount |
|--------|-----------------|-----------------|
| 1 Pole | 6.40mm (.25") | 0482 2001ZXP |

* NOTE: 20 ampere version of 482 Series Panel Mount fuseholders come standard as a single pole unit with flush edges on both sides (no "keys" typical with 15A units). Please refer to the diagrams on the following page for additional information.

15A PCB Mount and Panel Mount Fuseholders

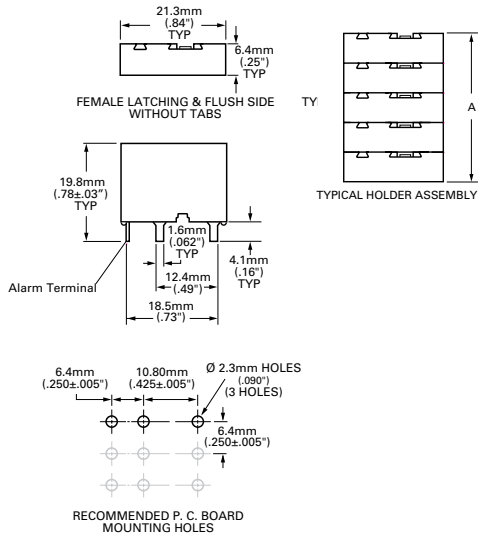
| Type | Holder Assembly Length* | 15A PCB Mount | 15A PCB Mount - Flush | 15A Panel Mount | 15A Panel Mount - Flush |
|---------|-------------------------|---------------|-----------------------|-----------------|-------------------------|
| 1 Pole | 6.40mm (.25") | 0482 0001ZXB | 0482 0001ZXB | 0482 0001ZXP | 0482 0001ZXP |
| 2 Pole | 12.80mm (.50") | 0482 0002ZXB | 0482 0002ZXB | 0482 0002ZXP | 0482 0002ZXP |
| 3 Pole | 19.05mm (.75") | 0482 0003ZXB | 0482 0003ZXB | 0482 0003ZXP | 0482 0003ZXP |
| 4 Pole | 25.04mm (1.0") | 0482 0004ZXB | 0482 0004ZXB | 0482 0004ZXP | 0482 0004ZXP |
| 5 Pole | 31.75mm (1.25") | 0482 0005ZXB | 0482 0005ZXB | 0482 0005ZXP | 0482 0005ZXP |
| 6 Pole | 38.10mm (1.50") | 0482 0006ZXB | 0482 0006ZXB | 0482 0006ZXP | 0482 0006ZXP |
| 7 Pole | 44.45mm (1.75") | 0482 0007ZXB | 0482 0007ZXB | 0482 0007ZXP | 0482 0007ZXP |
| 8 Pole | 50.80mm (2.00") | 0482 0008ZXB | 0482 0008ZXB | 0482 0008ZXP | 0482 0008ZXP |
| 9 Pole | 57.15 (2.25") | 0482 0009ZXB | 0482 0009ZXB | 0482 0009ZXP | 0482 0009ZXP |
| 10 Pole | 63.50mm (2.50") | 0482 0010ZXB | 0482 0010ZXB | 0482 0010ZXP | 0482 0010ZXP |
| 11 Pole | 69.85mm (2.75") | 0482 0011ZXB | 0482 0011ZXB | 0482 0011ZXP | 0482 0011ZXP |
| 12 Pole | 76.20mm (3.00") | 0482 0012ZXB | 0482 0012ZXB | 0482 0012ZXP | 0482 0012ZXP |
| 13 Pole | 82.55mm (3.25") | 0482 0013ZXB | 0482 0013ZXB | 0482 0013ZXP | 0482 0013ZXP |
| 14 Pole | 88.90mm (3.50") | 0482 0014ZXB | 0482 0014ZXB | 0482 0014ZXP | 0482 0014ZXP |
| 15 Pole | 95.25mm (3.75") | 0482 0015ZXB | 0482 0015ZXB | 0482 0015ZXP | 0482 0015ZXP |
| 16 Pole | 101.60mm (4.00") | 0482 0016ZXB | 0482 0016ZXB | 0482 0016ZXP | 0482 0016ZXP |
| 17 Pole | 107.95mm (4.25") | 0482 0017ZXB | 0482 0017ZXB | 0482 0017ZXP | 0482 0017ZXP |
| 18 Pole | 114.30mm (4.50") | 0482 0018ZXB | 0482 0018ZXB | 0482 0018ZXP | 0482 0018ZXP |
| 19 Pole | 120.65mm (4.75") | 0482 0019ZXB | 0482 0019ZXB | 0482 0019ZXP | 0482 0019ZXP |
| 20 Pole | 127.00mm (5.00") | 0482 0020ZXB | 0482 0020ZXB | 0482 0020ZXP | 0482 0020ZXP |
| 21 Pole | 133.35mm (5.25") | 0482 0021ZXB | 0482 0021ZXB | 0482 0021ZXP | 0482 0021ZXP |

* NOTE: 15 ampere gangable version of PCB Mount and Panel Mount fuseholders are keyed to prevent insertion of 20 ampere fuse. Please refer to "A" dimension of diagrams on following page. For additional terminal lengths, please contact Littelfuse.

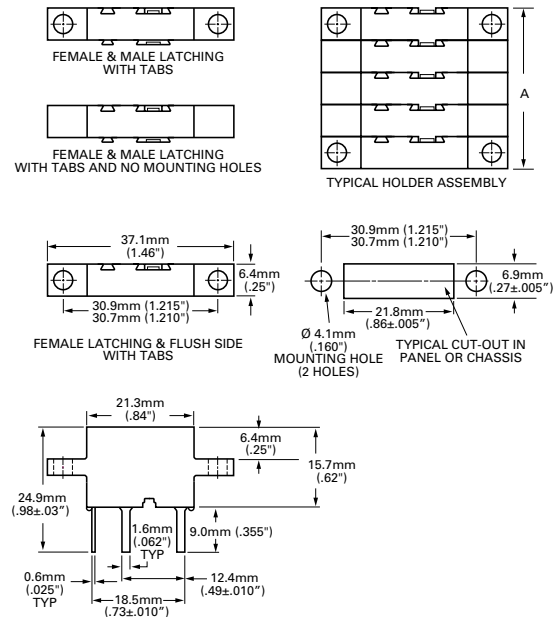


Dimensions

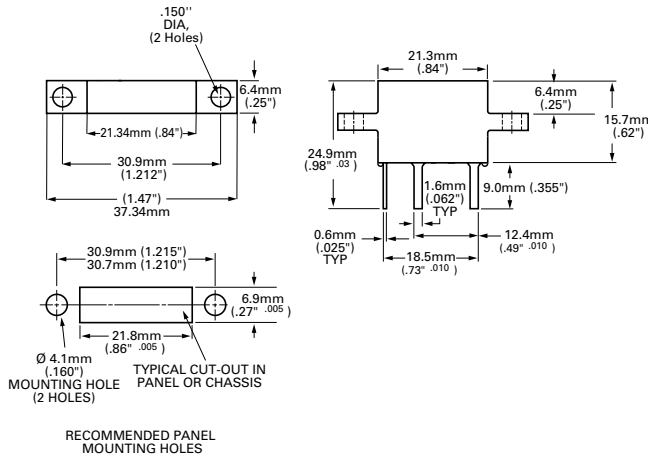
15A PCB Mount Series:



15A Panel Mount Series:



20A Panel Mount Series:



NOTE: The 20 ampere single pole holder is designed to accept all fuse ratings up to 20 amperes.

20 ampere fuseholders should be spaced 12.7mm (0.50") apart when loaded to maximum capacity, center to center to insure proper heat dissipation under normal operation.

Heatsinking may be required for operation in higher ambient temperatures or alternate configurations.

All terminals dimensions should be taken with fuse installed.